

# INSTALLATION INSTRUCTIONS

## Snap Top

Number plate holder

**Helmut Seitz** GMBH  
Kfz.-Produkte

Joseph-Baur-Str. 4  
DE-86316 Friedberg  
☎ +49 (0)821/54 38 62-0  
☎ +49 (0)821/54 38 62-99

Internet:  
www.helmut-seitz.de  
E-Mail:  
info@helmut-seitz.de

### FOR WORKSHOP USE ONLY

Attach the holder to the vehicle with ring washers (Ø 20 mm diameter) using the existing drill holes.

#### Illustration 1 - Opening

Insert the tool (supplied) from the inner side under one of the both locks at the top edge as shown in the illustration 1. Tilt the tool to the left and right side (see arrows) in order to release the raster lug from the floor of the holder. Do the same with the lock on the other side.

#### Illustration 2 - Insert the sign

Insert and push up the sign under the top edge of the holder-floor (arrow 1). At the same time press it on the holder-floor as flat as possible (arrow 2). Keep the sign pressed down and pull it behind the advertising bar on the entire width (arrow 3).

#### Illustration 3 - Closing

Press the two locks on the top edge (see arrow) until both lock in place with a hearable "click" sound.

#### Illustration 4 - Deinstallation

Open the two locks as described in illustration 1.

Slide the sign on the left or right side from the bottom to the top. Hold on (arrow 1)!

Insert the tool between the advertising bar and the sign. For an easier handling press the advertising bar towards the vehicle (arrow 2). Hold the sign and pull the tool through the gap on the entire width (arrow 3). The sign is ejected.

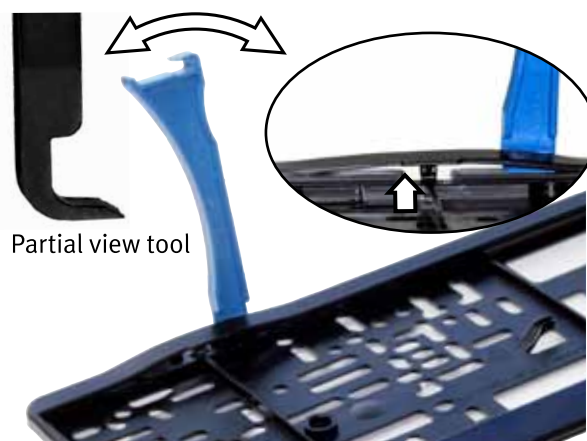


Illustration 1



Illustration 2



Illustration 3



Illustration 4